



DEMAND CLEANER AIR FOR CHANNELVIEW / CLOVERLEAF

Say NO to Particulate Matter pollution in YOUR neighborhood!

NEW AIR PERMIT:

BATTLEGROUND CONCRETE LLC - Concrete Batch Plant

Located at: 14900 Market Street, Houston, Texas 77015

What is being decided?

- Battleground Concrete, LLC has applied to the Texas Commission on Environmental Quality (TCEQ) for an air quality permit to construct a permanent concrete batch plant at 14900 Market Street, Houston, Harris County, Texas 77015. The facility would manufacture concrete by mixing materials like sand, aggregate, cement, and water. It would be authorized to operate 24 hours a day, 365 days a year.
- TCEQ can approve, amend, or reject the permit. The company must have an air permit to operate the facility.

What pollutants are emitted by concrete batch plants?

- Particulate Matter 2.5 (super-fine particles of soot, dust, silica, etc.)
 - When inhaled, it can enter the lung tissue and the bloodstream, triggering asthma attacks and adverse cardiovascular outcomes for vulnerable persons.
- Carbon monoxide, volatile organic compounds, sulfur dioxide, and nitrogen oxides.
 - Long term exposure to these air pollutants is hazardous to health and well-being.
- Noise and light pollution affect the mental well-being of residents near the facility.

What are the specific concerns about the Battleground Concrete facility?

- More than **1,200 households** are within 1 mile of the proposed facility.
- The proposed facility would also be close to several other environmental hazards and pollution sources. These include (within 1 mile) **4 other concrete batch plants/aggregate facilities, 1 Toxic Release Inventory (TRI) facility, 7 hazardous waste sites, a major highway intersection (I-10 and Sam Houston Tollway), and numerous other industrial facilities.** The cumulative impact of these facilities poses a significant health risk to nearby communities.

Everyone has a right to breathe clean air.

a: 2520 Caroline Street, Suite 100, Houston, TX 77004 | p: 713.528.3779 | w: airalliancehouston.org

- The proposed facility would also be **within 2 miles of 8 schools, 4 child care facilities, 1 nursing home, 28 places of worship, 5 parks/natural areas, among other sensitive use areas:**

Schools:

- Family Christian Academy
- Sam Houston Elementary
- Foundation Christian School
- North Shore Elementary
- Hamblen Elementary
- Barrett-Lee Early Childhood Center
- Endeavor High School
- McMullan Elementary

Child Care Facilities:

- Stirring Up Gifts Children Center
- Purpose Kids - Ashland Blvd
- King's Kids Learning Center
- Light of Houston Bilingual Academy

Parks and Natural Areas:

- Channelwood Park
- San Jacinto Memorial Park and Funeral Home
- Carpenters Bayou
- North Shore Rotary Park
- Cloverleaf Park

Nursing Home: Sweet Home Assisted Living

Places of Worship:

- The Shepherd's Field Community Church
- Dell Dale Agape
- Dell Dale Avenue Baptist Church
- South Drive Baptist Church
- Family Church
- Templo Pentecostal Amisadai
- Primera Iglesia Del Nazareno
- IPUH Channelview
- St. Andrew Catholic Church
- The River
- Planted Houston
- Second Baptist Church Channelview
- Sterling Wood Church
- Nueva Vida Christian Church
- God's Love Tabernacle International Church
- God's Neighborhood Church
- Tabernaculo de Reunión
- Iglesia Bautista Plenitud
- Iglesia de Dios
- Centro Cristiano Mas Que Vencedor
- Iglesia Cristiana La Vina
- Iglesia Nueva Vida
- Cloverleaf Baptist Church
- Nuevo Amanecer Baptist Church of Houston
- Iglesia de Dios Profecía
- Iglesia el Alfarero
- Good News Christian Fellowship Church
- ISGH Isa ibn Maryam Mosque

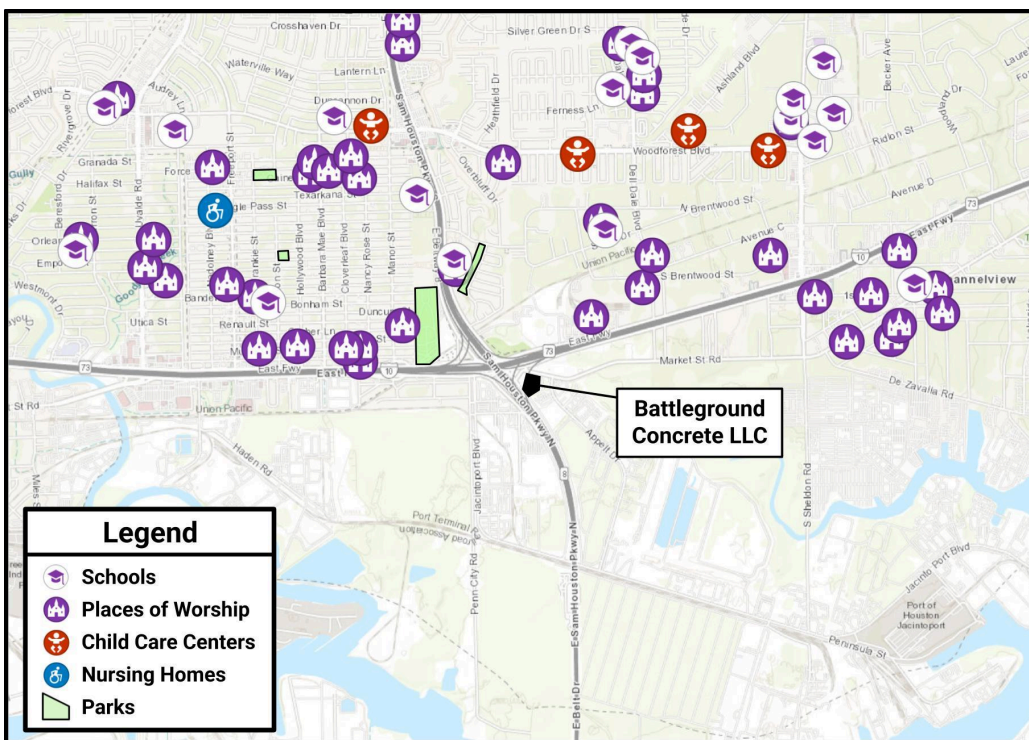
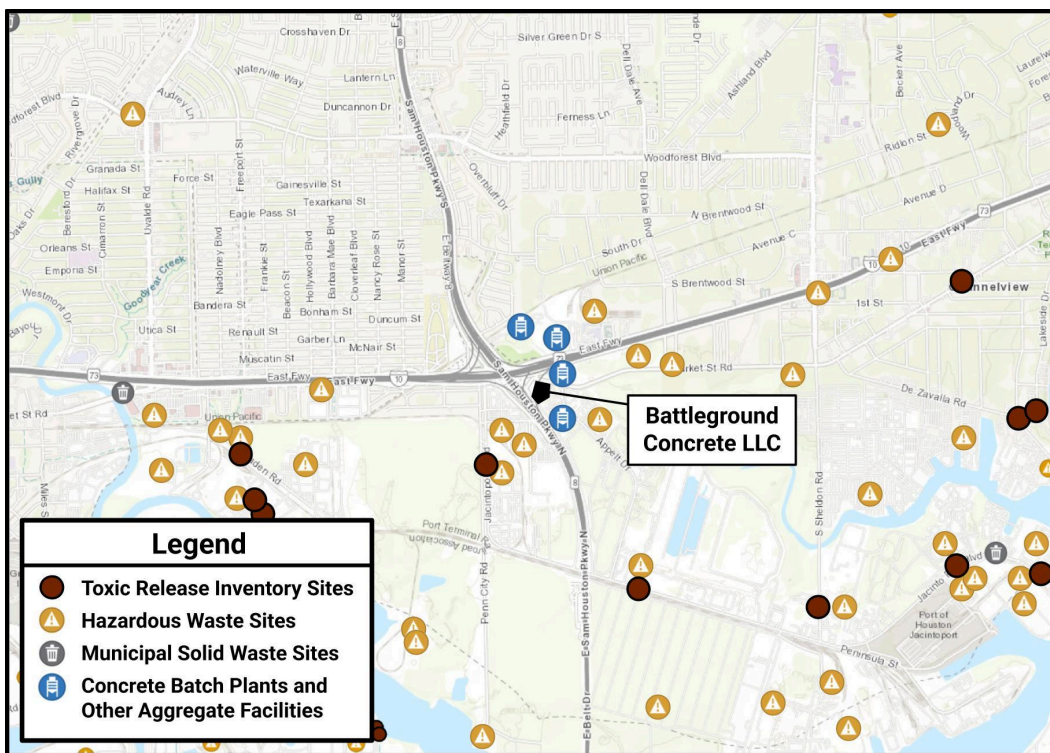
- Aggregate facilities like this one are disproportionately located in working-class communities of color, placing an undue environmental and health burden on these communities. The community within 1 mile of the proposed facility is comprised of:
 - 76% people of color
 - 72% identifying as Hispanic or Latino
 - 3% identifying as Black
 - 1% identifying as Asian
 - 56% low-income households
 - 67% households speak non-English languages at home:
 - 66% Spanish
 - 1% Asian and Pacific Island languages

Everyone has a right to breathe clean air.

a: 2520 Caroline Street, Suite 100, Houston, TX 77004 | p: 713.528.3779 | w: airalliancehouston.org

The map to the right shows the proposed facility's proximity to other environmental hazards and air pollution sources.

Multiple pollution sources increase an area's cumulative pollution burden, negatively impacting public health.



The map to the left shows the proposed facility's proximity to sensitive areas in the nearby community.

These sites are especially vulnerable to air pollution, as they are centers of community where vulnerable individuals spend much of their time.

Everyone has a right to breathe clean air.

a: 2520 Caroline Street, Suite 100, Houston, TX 77004 | p: 713.528.3779 | w: airalliancehouston.org

What should TCEQ do about the permit application?

- TCEQ should deny the permit and say “no” to the environmental and health harms posed by concrete batch plants like this one. They release too much air pollution to be located close to residential areas, especially since there are already numerous other industrial facilities that contribute to air pollution in the area.
- Barring a permit denial, TCEQ must strengthen the permit and enforce Best Pollution Control Practices to reduce the plant’s pollution.
- TCEQ should require fence-line monitoring to ensure community members know the amount of pollution being emitted.

What can I do to slow, stop, or strengthen this permit?

- Type up your comments and submit them to TCEQ online. To submit written comments, go to: <http://www14.tceq.texas.gov/epic/eComment/>. Type “182946” in the Permit Number box. You will be taken to an online form where you can type in your comments or attach a document. The form requires you to provide contact information. **See the next page for a sample comment.**
- Contact your elected officials (listed below) and voice your concerns about this concrete batch plant, which would contribute to the air pollution in your community. Ask them to attend the public meeting and submit a public comment opposing the facility.
 - **State Senator:** Carol Alvarado, 713-926-6257
 - **State Representative:** Ana Hernandez, 713-675-8596

Everyone has a right to breathe clean air.

a: 2520 Caroline Street, Suite 100, Houston, TX 77004 | p: 713.528.3779 | w: airalliancehouston.org

COPY AND PASTE THESE SAMPLE COMMENTS

I live near Battleground Concrete's proposed concrete batch plants at 14900 Market Street and oppose granting this permit.

Aggregate facilities emit health-harming pollutants including:

- Particulate Matter 2.5, which, when inhaled, can enter into lung tissue and the bloodstream, triggering asthma attacks and adverse cardiovascular outcomes for vulnerable persons.
- Carbon monoxide, volatile organic compounds, sulfur dioxide, and nitrogen oxides: all hazardous air pollutants.
- Noise and light pollution, impacting the mental well-being of residents around the facility.

More than 1,200 households are within one mile of the proposed facility. It would be located close to a number of other environmental hazards and sources of air pollution, including 4 other concrete batch plants/aggregate facilities, 1 Toxic Release Inventory (TRI) facility, 7 hazardous waste sites, a major highway intersection, and numerous other industrial facilities. The cumulative health impact of these sources of air pollution must be considered. In addition, the facility would be within 2 miles of 8 schools, 4 child care facilities, 28 places of worship, and 5 parks/natural areas, among other sensitive use areas.

I understand that this facility would be a major source of hazardous air pollution, including Particulate Matter, which has been linked to respiratory, cardiovascular, and cancer illnesses. I am writing this to prioritize my health and that of my community. I urge you to take this opportunity to protect the well-being of your fellow Texans—time and time again, TCEQ has failed in doing so.

ADD YOUR PERSONAL TESTIMONY HERE: This can be about your health, your quality of life as affected by this facility, or others, etc.

I want TCEQ to prioritize the community's health, as they have the power to stop this concrete batch plant from exposing me and my neighborhood to continued air pollution and all of its negative health and quality of life impacts. Reject this permit!

END OF SAMPLE COMMENTS

For additional information, contact Air Alliance Houston at (713) 528-3779.

Go to our website for updates on permit campaigns:
www.airalliancehouston.org > Community Updates > AirMail

To join our movement for clean air, sign up for our mailing list by scanning the QR code or by following this link: tinyurl.com/subscribeaah



Everyone has a right to breathe clean air.

a: 2520 Caroline Street, Suite 100, Houston, TX 77004 | p: 713.528.3779 | w: airalliancehouston.org